

Tomorrow's Technology Today



Low Voltage Electronic Specialist

TIPS FOR VIEWING THIS PRESENTATION:

1. Take advantage of the built-in **Table of Contents** by clicking on the **palette icon** (show/hide navigation pane) located just to the right of the printer icon. Or you can go up to **WINDOW...** then select **Show Bookmarks**.
2. After selecting from the menu on the left, click on the palette icon once more and the selected section will open full screen for easy viewing.
3. To go to a website on the Internet from this pdf file, right click on the web or email address, then select **"Open Weblink in Browser"**.

Touch Screen Control



We are an authorized dealer for . They produce hardware and software, which is designed to integrate with  family of Integrated Facilities Management Systems. The control program runs on a dedicated, specially designed Dell™ computer with at least a 30Gig hard drive and a three-year on-site warranty. We build our systems with one or more flat screen, touchscreens built into the wall in each selected room. *GrafikTouch™* is designed to give a graphical view of his/her very own home or business while adding important control features such as:

Security & Fire Heating & Air Conditioning Architectural Lighting
Zone Tracking CCTV Remote Video Surveillance Audio/Video
Home Theater Cable TV DVD, and High Speed Internet Access

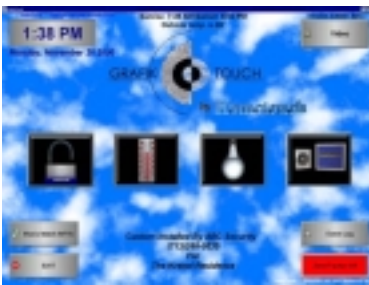


When you touch the **Audio-Video** button the system will present you with a control panel whereby you can select any one system or a macro, which could initiate your Home Theater program. Once you have selected the CD Player, **as an example**, a control panel specific to that particular piece of equipment will appear for your manipulation. Make control inputs the same way you would control with a handheld Infrared Controller. The system will accept Infrared coded signals up to 450 KHz, which includes virtually any component from any manufacturer. You can even have all your CD music pre-loaded and play off your own MP-3 player. Home Theater macros and individual macros will be programmed for each room.



When you touch the **Lighting** icon the system will present different lights throughout your home. By touching any of the lights it will give you a graduated dimming bar and a % dimming button for each of those particular lights. Go ahead and turn a light On, OFF, dim it, or brighten it. The real value of our architectural lighting system is received when you touch one of your lighting **scene** buttons on the right side. It will display your lighting macros for dimming or adjusting many lights and appliances at one time.

[Click here](#) to review the most popular and standard programs, which will be incorporated into your home after custom designing the programming for your family.



Touch the **Video** button on the upper right corner of any screen and a TV will appear. Touch the TV and the system will present you with the control for the **GrafikTouch** television. Here with simple touches of the screen you can bring it to full-screen, freeze the video, change the channel, adjust the volume, etc.

Touch the red **Zone Tracker** button in the lower right-hand corner of the screen. It is for turning on the tracking of the **zone tracking system**, which allows your CCTV security cameras to pop up on the screen as pre-selected zones are violated. It is a great tool for keeping an eye on small children or elderly persons in your home. If you aren't home we can program any length of video recording you desire. Rather it be an Intruder, the Mailman, or the Nanny, you have it recorded for later viewing.



Touch the **Security** icon and you will be presented a graphical blueprint of your home or business security system including all sensors, motion detectors, smoke detectors, cameras etc. Here you will be able to arm or disarm the system, bypass a particular zone, and check the status of all the entire system. The "**NEXT**" button will give you blueprint views of additional floors or sections.

We can even have the system call you direct when certain zones are violated. **Example:** When your temp sensor detects a rising change of temperature in your wine cellar, it will call you so that you can do something about.

If you touch the **Event Log** in the lower right-hand corner of the screen, it will download all the most recent events as they occurred in the automated security system. You can print them if desired.



Energy savings and safety are the primary reasons why automating the **Heating & Air Conditioning** are important. And when the security system is integrated into the package, your window and door sensors become triggers for energy saving automated control.

Touch the **Temperature** button in the upper left-hand corner of the screen. Select any Temperature Zone (Living Room, Master Bedroom, Upstairs etc., maximum capacity up to 64 digital temperature sensor controllers), and it will present you with the controls for that particular temperature sensor. Hit change on the keypad and change the desired temperature. Touch the **Thermostats-at-a-Glance** button and view all the thermostats **heat** set point, **cool** set point, and **current** temperature; then make a change.

Contact Us @

American Industries Corp.

www.aicorp.net

sales@aicorp.net

(808) 722-8677